

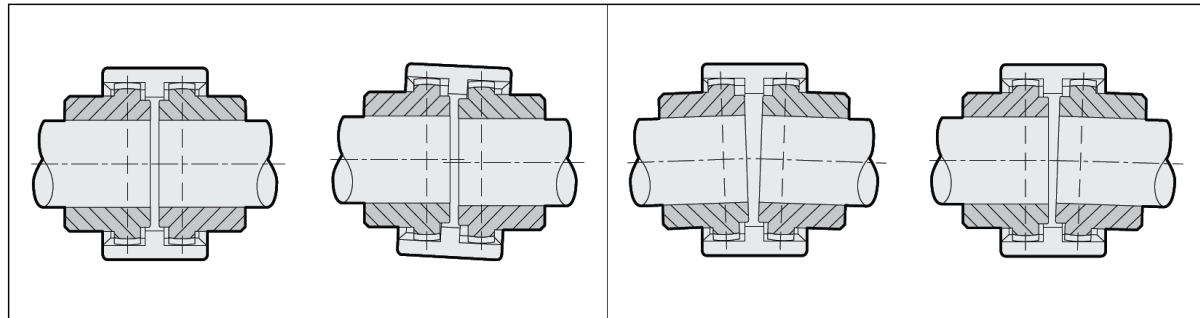


Sprzęgła zębate

All4Machines, ul. Konarzewskiego 42, 62-030 Luboń, NIP 779-224-61-85,
+48 789 234 323, +48 798 788 625, fax +48 61 666 01 36, office@a4m.com.pl,
<http://www.a4m.com.pl/>

Toothed couplings with pa sleeve

Disalignments



Aligned shafts

Radial misalignment

Angular misalignment

Radial and angular misalignment

COUPLING SELECTION

Torque-based selection: the coupling must be chosen basing on the max. motor torque, which should never exceed the coupling's permissible peak torque.

Technical data

Type of coupling	Power factor rpm		Torque Nm		Transmitted power in kw to rpm								Rpm/1' max	(1) Mass Kg	(1) J Kg cm ²	Max. Disalignment per hub		Axial misalignment mm.
	norm.	max.	norm.	max.	750		1000		1500		3000					Angular (2)	Radial mm.	
					norm.	max.	norm.	max.	norm.	max.	norm.	max.						
14	0.0011	0.0023	11,5	23	0,8	1,5	1,1	2,0	1,6	3,0	3,3	6,0	14000	0,166	0,27	±2°	0,7	± 1
19	0.0019	0.0037	18,5	36,5	1,3	2,7	1,8	3,7	2,7	5,5	5,4	11,1	12000	0,276	0,64	±2°	0,8	± 1
24	0.0023	0.0047	23	46	1,7	3,5	2,3	4,7	3,4	7,0	6,9	14,1	10000	0,312	0,92	±2°	0,8	± 1
28	0.0053	0.0106	51,5	103,5	3,9	7,9	5,2	10,6	7,8	15,9	15,6	31,8	8000	0,779	3,45	±2°	1	± 1
32	0.0071	0.0142	69	138	5,2	10,5	7,0	14,1	10,5	21,1	21,0	42,3	7100	0,918	5,03	±2°	1	± 1
38	0.0090	0.0181	88	176	6,7	13,5	9,0	18,0	13,5	27,0	27,0	54,0	6300	1,278	9,59	±2°	0,9	± 1
42	0.0113	0.0226	110	220	8,4	16,8	11,2	22,5	16,8	33,7	33,6	67,5	6000	1,473	13,06	±2°	0,9	± 1
48	0.0158	0.0317	154	308	11,8	23,6	15,8	31,6	23,7	47,4	47,4	94,8	5600	1,777	18,15	±2°	0,9	± 1
55	0.0290	0.0580	285	570	21,7	43,5	29,0	58,0	43,5	87,0	87,0	174,0	4800	3,380	49,44	±2°	1,2	± 1
65	0.0432	0.0865	420	840	32,1	64,3	42,9	85,8	64,3	128,7	128,7	257,4	4000	4,988	106,34	±2°	1,3	± 1

(1) Refers to the standard coupling complete with max. bore and no keyway. (2) Per hub

MOUNTING INSTRUCTIONS

- Fasten the two halfcouplings to their respective shafts, making sure that their inner sides are flush with the shaft ends.
- Drive the sleeve onto the two half-couplings while adjusting the distance between them („S” dimension) and aligning the two shafts.
- Bring the two elements you wish to connect to their respective positions.
- Before you rotate the coupling, make sure that the sleeve is free to travel axially.

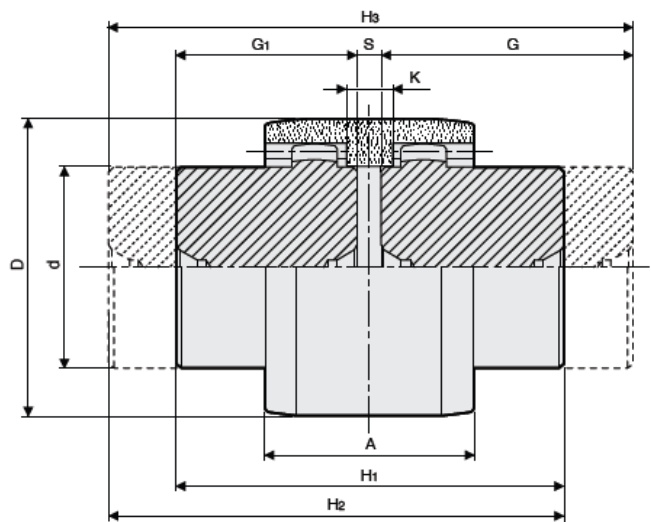
All4Machines, ul. Konarzewskiego 42, 62-030 Luboń, NIP 779-224-61-85,
+48 789 234 323, +48 798 788 625, fax +48 61 666 01 36, office@a4m.com.pl,
<http://www.a4m.com.pl/>

Toothed couplings with pa sleeve

TOOTHING FEATURES

TYPE	Mod.	Z	Angolo pressione / Pressure angle	De	Dp	Tooth Width
14	1,5	20	20°	33	30	8
19	1,5	24	20°	39	36	8
24	1,5	28	20°	45	42	8
28	1,5	34	20°	54	51	10
32	1,5	40	20°	63	60	10
38	1,5	44	20°	69	66	12
42	1,5	50	20°	78	75	14
48	1,5	50	20°	78	75	14
55	2	45	20°	94	90	16
65	2,5	42	20°	110	105	20

Steel = C. 43 UNI 7847



TYPE	DIMENSIONS [mm]											Kg		Polyamide sleeve	
	Bore		A	d	G	G1	D	S	K	H1	H2	H3	Short hub		Long hub
	min	max													
14	6	14	37	24	40	23	40	4	6	50	67	84	0,09	0,15	0,02
19	8	19	37	30	40	25	48	4	6	54	69	84	0,15	0,23	0,03
24	10	24	41	36	50	26	52	4	8	56	80	104	0,21	0,40	0,04
28	10	28	46	44	55	40	66	4	9	84	99	114	0,48	0,66	0,07
32	12	32	48	50	55	40	76	4	9	84	99	114	0,63	0,86	0,09
38	14	38	48	58	60	40	83	4	9	84	104	124	0,83	1,25	0,11
42	20	42	50	65	60	42	92	4	9	88	106	124	1,11	1,58	0,14
48	20	48	50	67	60	50	95	4	9	104	114	124	1,37	1,65	0,16
55	25	55	58	82	65	52	114	4	10	108	121	134	2,12	2,66	0,26
65	25	65	68	95	70	55	132	4	12	114	129	144	3,07	3,92	0,39

Assembly distances

On request: Finished bore in compliance with ISO standards, H7 tolerance - keyway to DIN 6885, JS9 tolerance. Bore for screws.

All4Machines, ul. Konarzewskiego 42, 62-030 Luboń, NIP 779-224-61-85,
+48 789 234 323, +48 798 788 625, fax +48 61 666 01 36, office@a4m.com.pl,
<http://www.a4m.com.pl/>